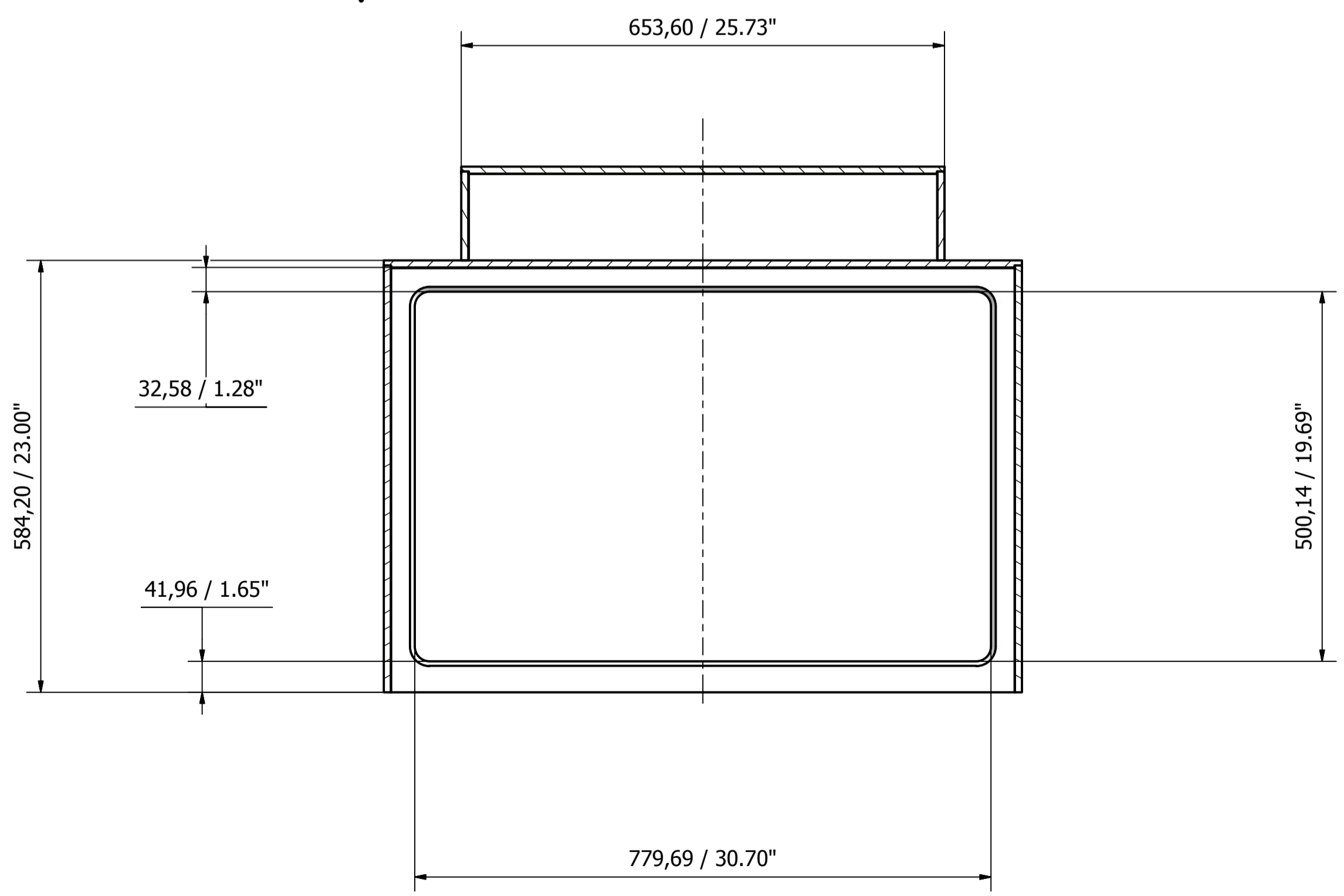
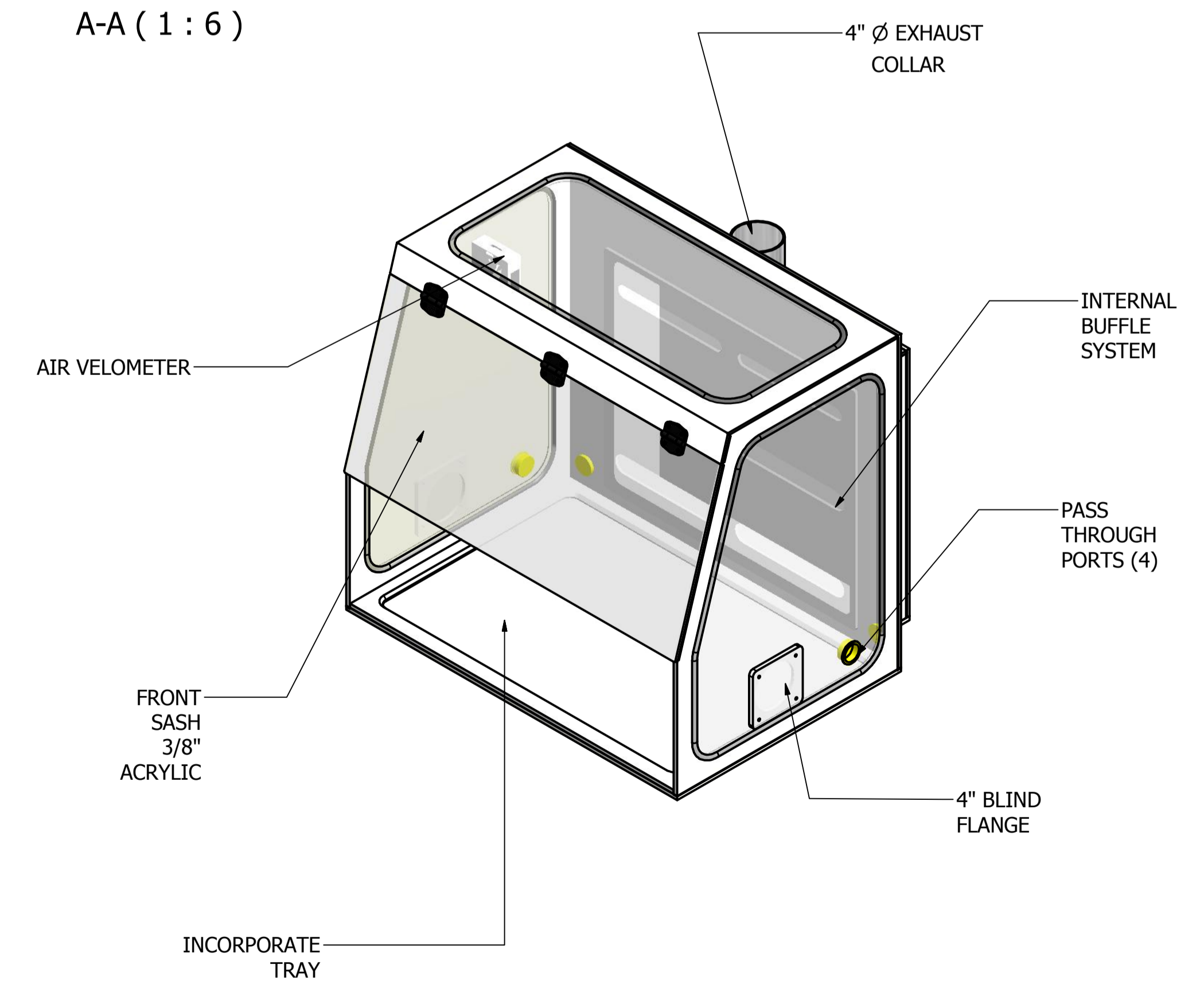


- NOTES :
- 1.0 CUSTOMER :
 - 2.0 SUBMIT DRAWINGS FOR APPROVAL.
 - 3.0 INCLUDING:
 - 3.1 FRONT SASH BUILT IN 3/8" ACRYLIC.
 - 3.2 SIDES AND TOPS WINDOW BUILT IN 1/4" ACRYLIC.
 - 3.3 BODY BUILT IN POLYPROPYLE SEAMLESS, NON-POROUS WATERTIGHT INSIDE, THERMALLY FUSE, 3/8" WHITE.



A-A (1 : 6)



B-B (1 : 6)

Designed by CFG	Checked by	Approved by	Date 9/21/2015	Date
AIR SCIENCE USA		VE34T-PP		
VE34t-MainGassem.R3		Edition	Sheet 1 / 1	