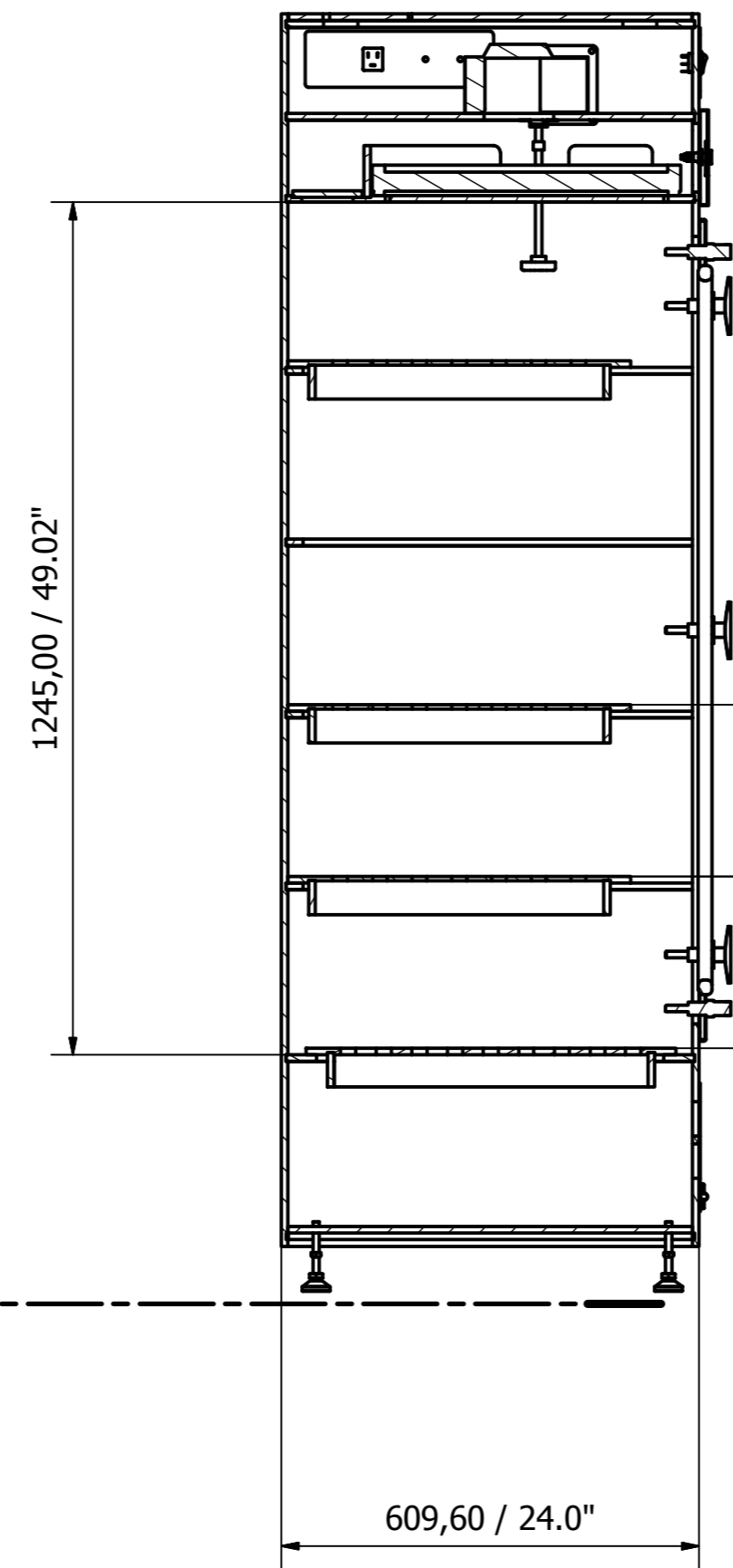
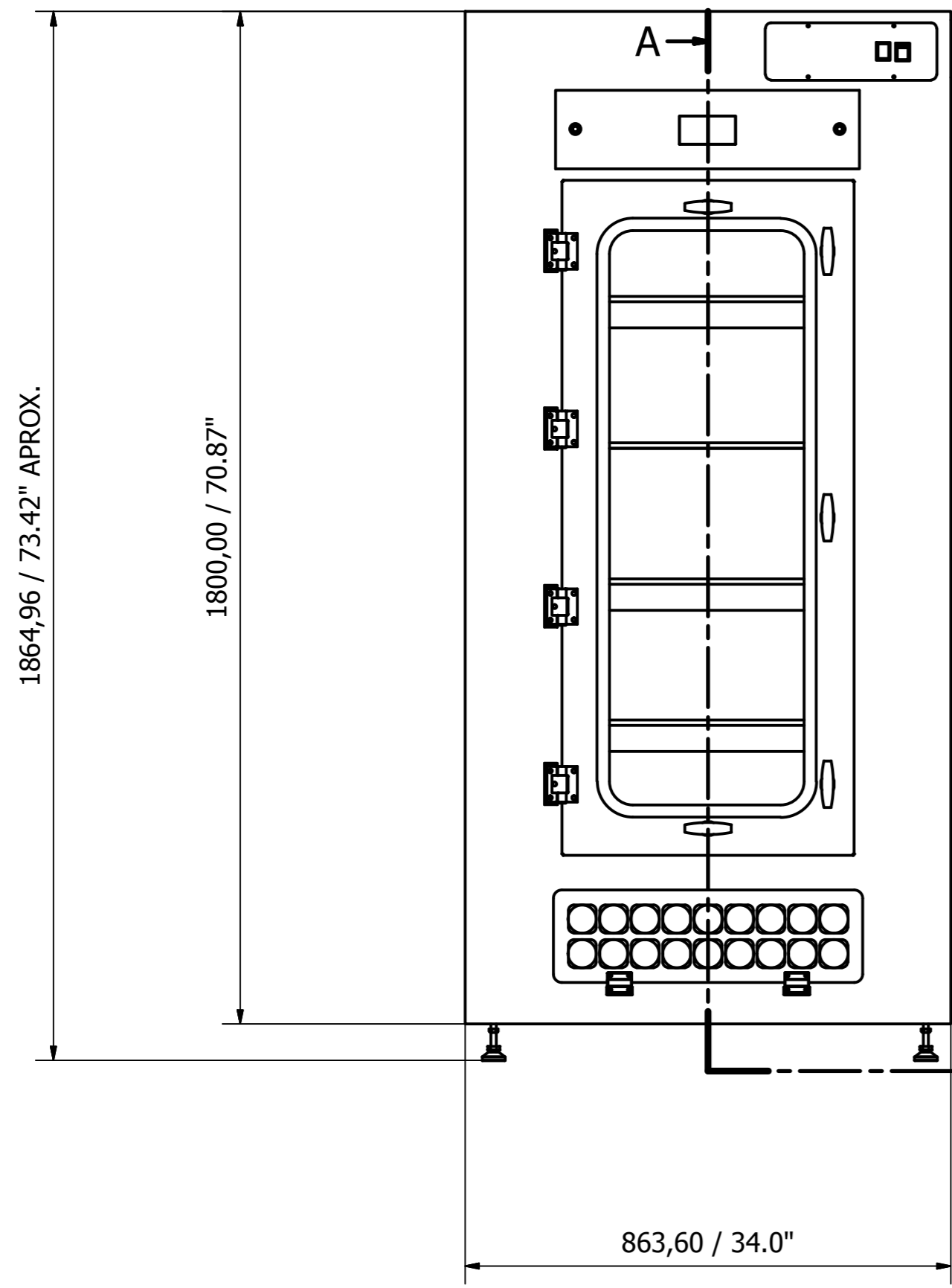
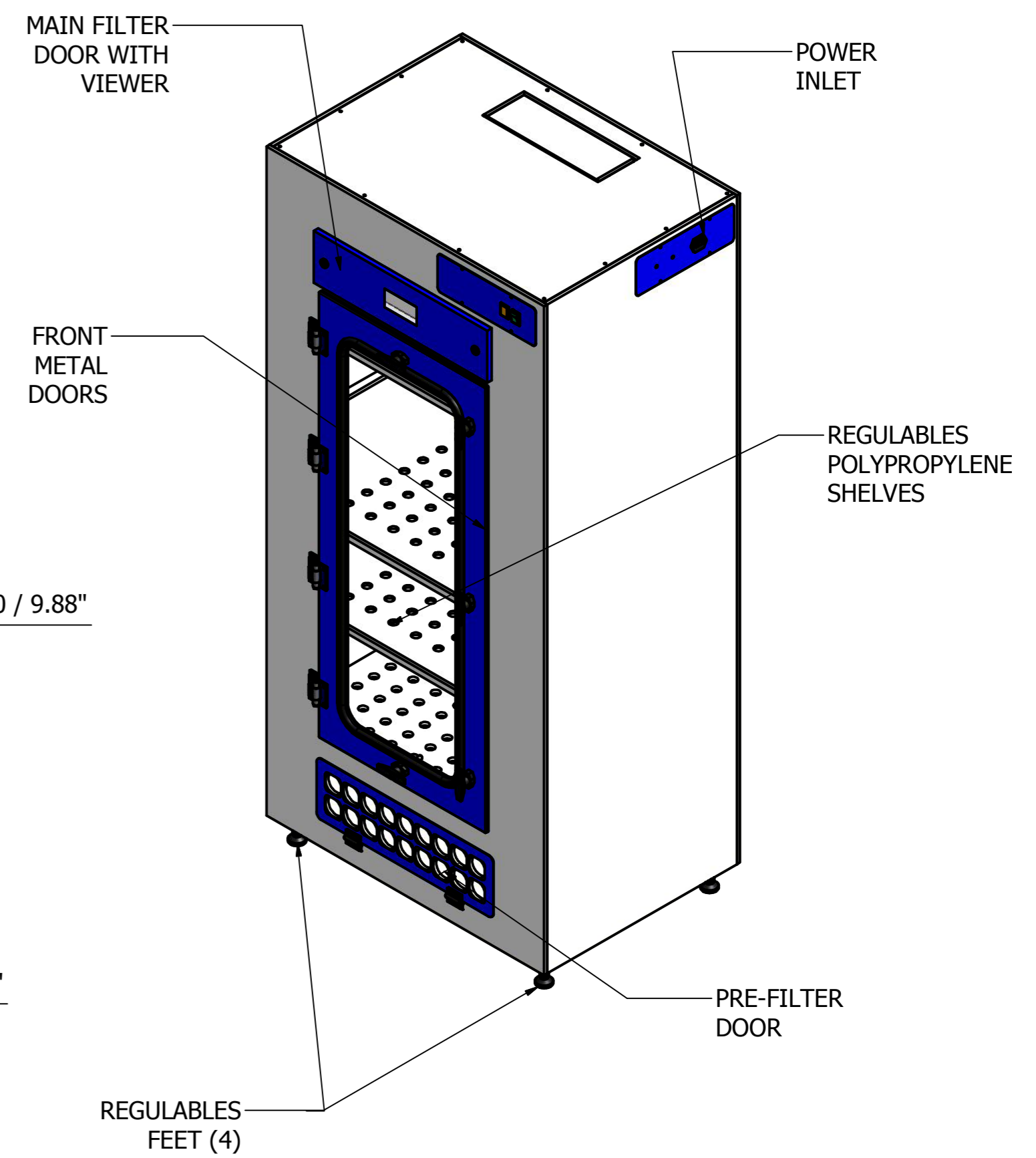


REVISION HISTORY				
ZONE	REV	DESCRIPTION	DATE	APPROVED
RIGHT SIDE	1	HOLE POWER INLET	2/3/2017	P CH
RIGHT SIDE	2	HOLE FOR CONTROL PANEL	8/23/2017	P CH



A-A ( 0.10 : 1 )



- NOTES:
- 1.0 CONSTRUCTION:
  - 1.1 BODY BUILD IN WELDED PP 3/8".
  - 1.2 FRONT METAL DOOR WITH TEMPERED GLASS.
  - 2.0 REMOVABLE POLYPRO SHELVES IQUAL SPACING BETWEEN SHELVES.
  - 3.0 REGULABLES FEET.
  - 4.0 STANDARD FEATURES APPLIED.

Designed by CFG	Checked by	Approved by	Date 1/13/2014	Date
AIR SCIENCE USA		SAFESTORE 34T		
SC34T1800R12F-GAssem			Edition 2	Sheet 1 / 1