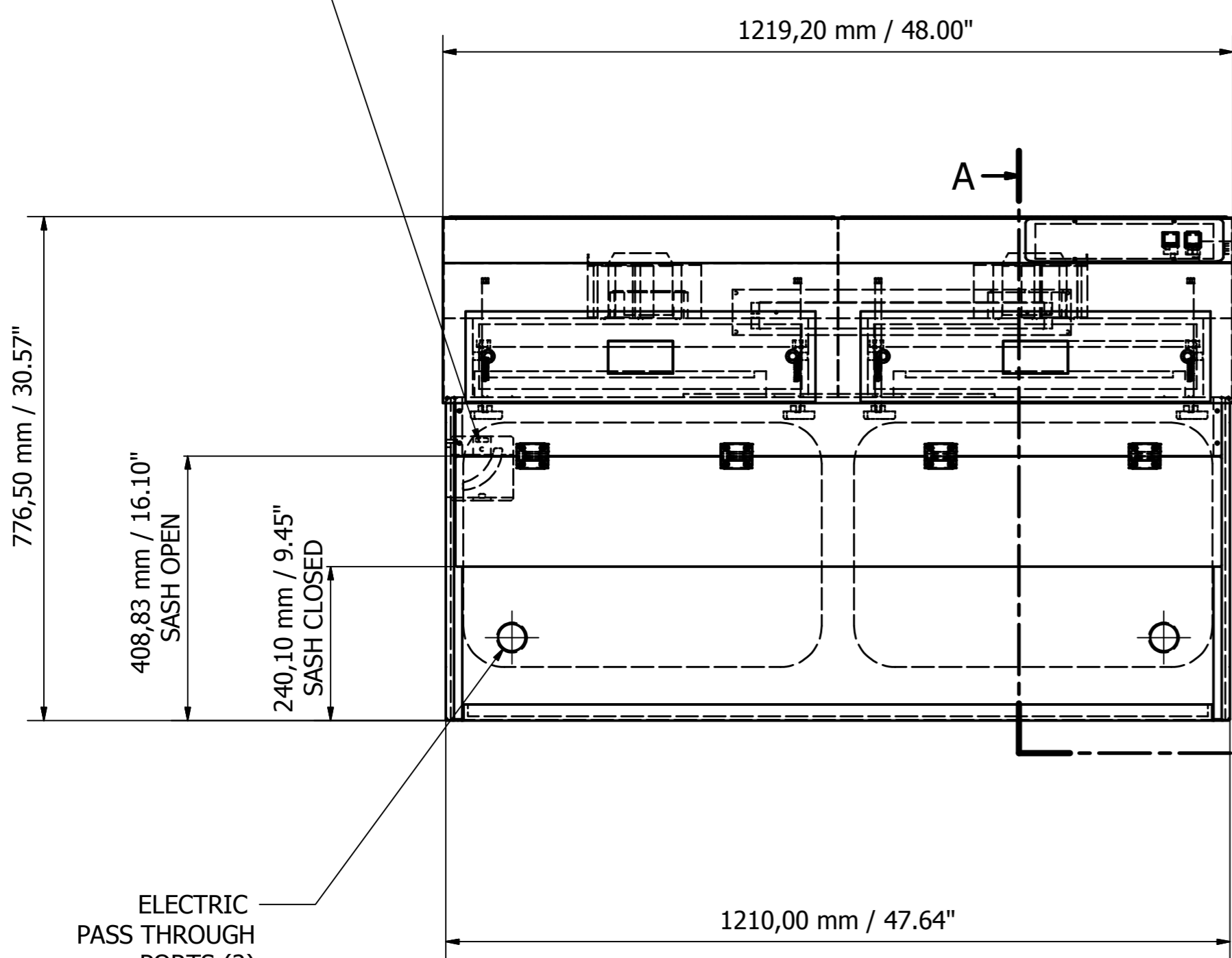


AIRFLOW METER (OPTIONAL)



776,50 mm / 30.57"

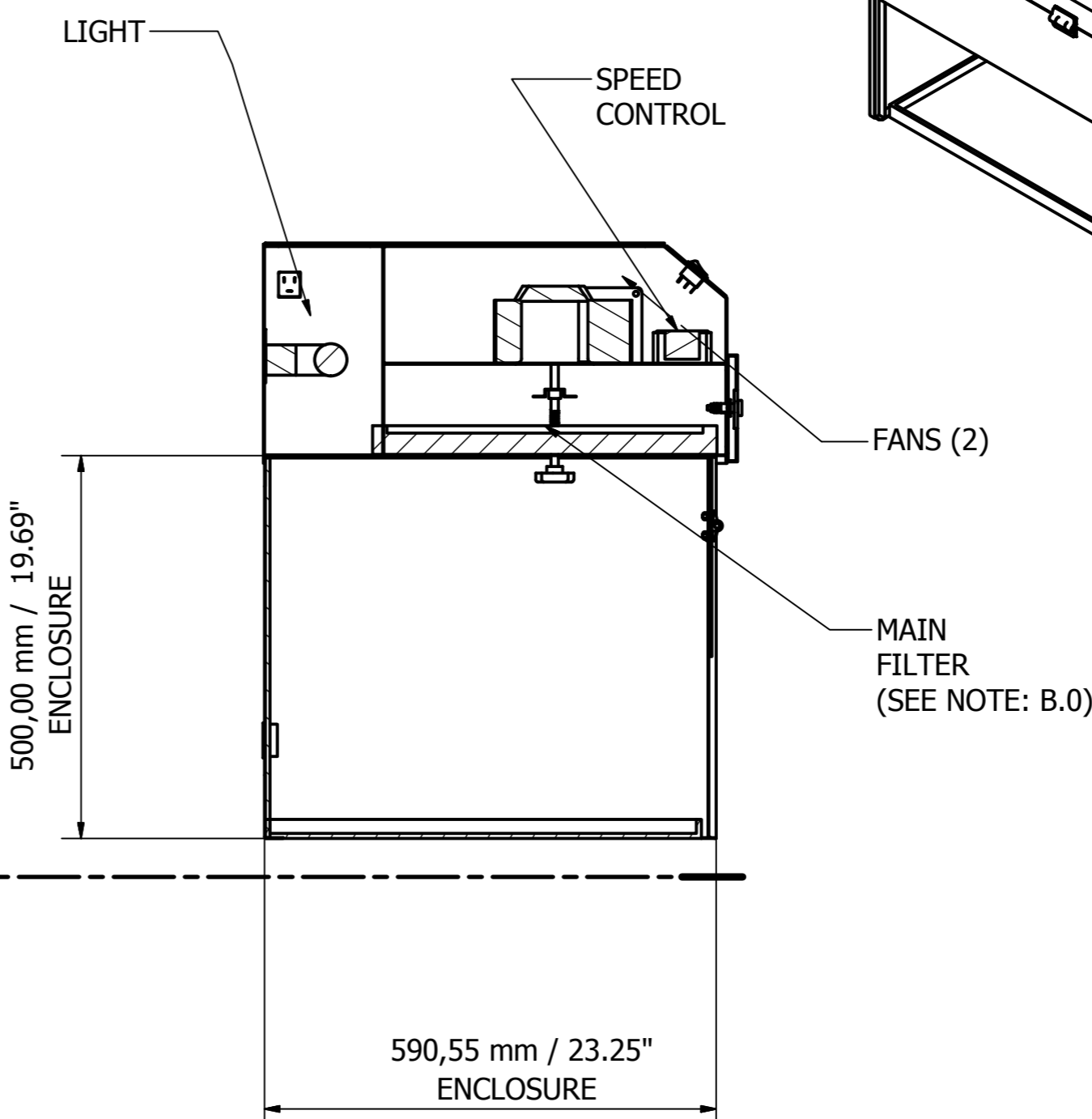
408,83 mm / 16.10"
SASH OPEN

240,10 mm / 9.45"
SASH CLOSED

ELECTRIC PASS THROUGH PORTS (2)

1210,00 mm / 47.64"

A-A (1:8)



500,00 mm / 19.69"
ENCLOSURE

590,55 mm / 23.25"
ENCLOSURE

FILTERS ACCESS DOORS WITH FILTERS I.D. WINDOWS AND KEY LATCHES (4)

LOW AIRFLOW ALARM

POWER INLET

SPEED CONTROL

FANS (2)

MAIN ON/OFF SWITCH

MAIN FILTER (SEE NOTE: B.0)

POLYPRO SPILLAGE TRAY (OPTIONAL)

NOTES:

- A.0 STANDARD ON ALL UNITS:
- 1.0 CONSTRUCTION: EPOXY COATED MILD STEEL HEAD UNIT AND COLUMNS.
- 2.0 FRONT, SIDES AND BACK PANELS MADE OF 1/4" CLEAR ACRYLIC.
- 3.0 COLOR EPOXY COATED LIGHT GRAY RAL 7035/ PMS 421.
- 4.0 CENTRIFUGAL FAN.
- 5.0 POWER SUPPLY:
- 5.1 FOR 120 VOLT 60 HZ, TUV LABELED.
- 5.2 FOR 230 VOLT 50 HZ, TUV AND CE LABELED.
- 6.0 SWITCHES, MAIN ON/OFF.
- 7.0 MONITORING, LOW AIRFLOW.
- 8.0 HINGED FRONT SASH.
- 9.0 ELECTROSTATIC PREFILTER.
- 10.0 TWO PASS THROUGH PORTS.
- 11.0 FILTER DOOR WITH KEY.
- B.0 MAIN FILTER IS APPLICATION-SPECIFIC; MUST ORDER SEPARATELY.

| | | | | |
|--------------------|------------|-------------|-------------------|----------------|
| Designed by CFG | Checked by | Approved by | Date 5/19/2014 | Date |
| AIR SCIENCE USA | | P5.48SL-R12 | | |
| | | P548SLXTR12 | Edition | Sheet 1 / 1 |