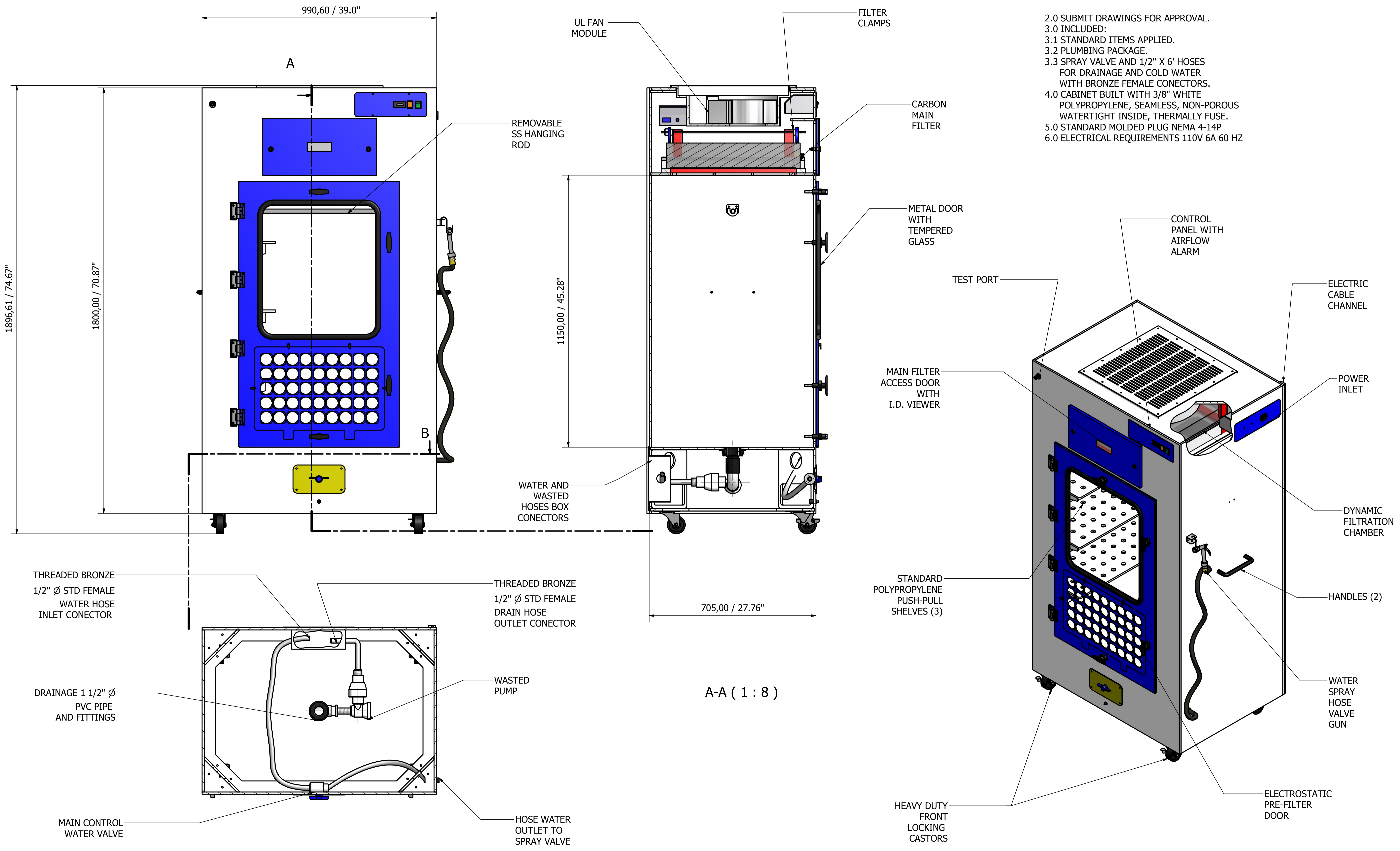


REVISION HISTORY				
ZONE	REV	DESCRIPTION	DATE	APPROVED
FAN LEVEL	1	UL FAN MODULE	7/06/2010	P.CH
MAIN FILTER LEVEL	2	METAL CLAMPS	8/12/2011	P.CH
RIGHT SIDE	3	METAL SHOEBOX	3/28/2012	P.CH
TOP COVER	4	UL FAN METAL MODULE	6/13/2019	P.CH

- NOTES:
- 1.0 CUSTOMER:
  - 2.0 SUBMIT DRAWINGS FOR APPROVAL.
  - 3.0 INCLUDED:
    - 3.1 STANDARD ITEMS APPLIED.
    - 3.2 PLUMBING PACKAGE.
    - 3.3 SPRAY VALVE AND 1/2" X 6' HOSES FOR DRAINAGE AND COLD WATER WITH BRONZE FEMALE CONNECTORS.
  - 4.0 CABINET BUILT WITH 3/8" WHITE POLYPROPYLENE, SEAMLESS, NON-POROUS WATERTIGHT INSIDE, THERMALLY FUSE.
  - 5.0 STANDARD MOLDED PLUG NEMA 4-14P
  - 6.0 ELECTRICAL REQUIREMENTS 110V 6A 60 HZ



Designed by CFG	Checked by	Approved by	Date 8/6/2012	Date
AIR SCIENCE USA		DC39UL-1800 SAFEKEEPER		
DC39UL-GAssem		Edition 4	Sheet 1 / 1	