

## Package and Mail Inspection Workstation

- Provides Added Protection from Vapors and Particulates During Package Inspection



**34 watt<sup>1</sup>** Purair P5-36-XTS SafeSEARCH shown with optional air velometer.



**22–50 watt<sup>1</sup>**

The single EC blower motor assures lower cost of ownership in one of the world's most energy efficient ductless fume hoods.

## CONTENTS:

- Product Overview (p.2)
- Design Features (p.3)
- Performance & Selection (p.4)
- Filtration Technology (p.5)
- Specifications (p.6)
- Options & Accessories (p.8)

**SafeSEARCH**  
Ductless Fume Hoods

24 • 36 • 48

PRODUCT OVERVIEW

2

## INTRODUCTION

Purair® SafeSEARCH ductless fume hoods are a series of high efficiency workstations designed to increase protection from drugs, chemical vapors and particulates during the packaging examination process. The innovative [Multiplex™ Filtration Technology](#) combines a broad spectrum, general purpose carbon filter with a HEPA filter to protect the investigator and the environment.

## APPLICATIONS

Using innovative filtration technology, the Purair SafeSEARCH creates a safe work environment over the widest range of applications in the industry.

Routine or Suspicious Envelope and Package Inspection \ Forensics \ Evidence Examination \ Mailrooms \ Airports \ Bus Terminals \ Vendor Receiving Bays \ Government Offices \ Law Enforcement \ Correctional Facilities



Deep into its second generation, Air Science embraces the diversity and cultural heritage of the founders and co-workers who are continuing a tradition of excellence. Demonstrating a commitment to adaptation, inclusion and quality output from a United States-based company with a domestic and global reach.



## KEY FEATURES

- Protects the investigator from hazardous drugs, chemicals and particulates.
- Easy to change filters.
- High efficiency EC blower.
- Improved filter clamping eliminates bypass leakage.
- Filter blockage alarm.

## DUCTLESS TECHNOLOGY

### The Eco-Friendly Choice

Advanced carbon filtration technology offers a safe, high performance alternative to conventional ducted fume hoods for a broad range of applications.

**Environmental Benefits.** Air Science® ductless fume hoods isolate and trap chemical vapors to prevent ecological impact through release into the environment.

**Versatile.** Each workstation includes a broad spectrum multi-chemical carbon filter combined with a HEPA filter. A range of carbon filter chemical families can be specified depending on the type of contamination that may be expected in a particular facility.

**Easy to Install.** The ductless fume hood is self-contained and does not require venting to the outside. Many units are portable and may be moved from one location to the next with minimal downtime and without filter changes. Set-up, operation and filter maintenance are straightforward.

**Energy Efficient.** Because filtered air is returned to the room, no demands are required of the facility HVAC capacity for make-up air.

**Cost Effective.** Facility ductwork, HVAC and construction costs are eliminated.

**Safe to Use.** Cabinet airflow and face velocity protect users from incidental exposures to fumes.

**Self-Testing.** (selected models) Electronic airflow monitoring ensures continuous safety. An electronic gas sensor monitors carbon filter performance.



**50 watt<sup>1</sup>** Purair P5-48-XT SafeSEARCH shown with optional FSA/Autocal controller and mobile cart.



**22–50 watt<sup>1</sup>**

The single EC blower motor assures lower cost of ownership in one of the world's most energy efficient ductless fume hoods.

## CONTENTS:

- Product Overview (p.2)
- Design Features (p.3)
- Performance & Selection (p.4)
- Filtration Technology (p.5)
- Specifications (p.6)
- Options & Accessories (p.8)



## DESIGN FEATURES

- A. Filter I.D. Window:** A convenient, strategically placed front cover window shows the installed filter part number and installation date to encourage timely filter replacement.
- B. Control Panel:** Electronic controls and displays include switches for the blower and filter blockage alarm.
- C. Filter Blockage Alarm:** Continuously monitors filter loading and alerts the user when service is needed.
- D. Air Velometer:** An optional analog air velocity meter is positioned in the user's field of vision.
- E. Steel Support Frame:** The chemical resistant epoxy coated steel frame adds mechanical strength. Optional all polypropylene construction is available if desired, see accessories.
- F. Hinged Front Sash:** The sash is easy to open and close. When closed, the cabinet sash protects the contents from inadvertent external contact and better isolates the air within.
- G. Work Surface:** The internal work surface includes a black, polypropylene work tray to improve visibility of white powders such as illegal drugs.
- H. Pass Through Ports:** Electrical cords and cables are safely routed into the cabinet through ports on the back.
- I. Electrostatic Pre-Filter:** The 99.5% effective electrostatic pre-filter is accessible from inside the chamber to contain the release of any particulates that it traps. The pre-filter can be changed while the unit is operating to prevent operator exposure to chemical vapors.

**J. Filter Door Key:** Filter access keys prevent unauthorized removal or accidental exposure to dirty filters.

**K. Internal Manual Speed Controller:** Authorized personnel may set the EC blower speed as desired.

**L. Stand:** Optional mobile cart with locking casters.

## ADDITIONAL FEATURES

**360 Degree Visibility:** Clear back and side panels allow ambient light into the chamber and provide users with an unobstructed view of contents.

**Standards Compliant:** Performance specifications and construction meet or exceed relevant standards to ensure operator safety.

**Construction:** All models are available in either metal or polypropylene construction. Specify metal or polypropylene when ordering. See selection chart for specifications and dimensions. Available in 120V, 60Hz and 230V, 50Hz models.

**22 watt<sup>1</sup>** Purair P5-24-XT SafeSEARCH, shown with optional velometer and mobile cart.  
Ductless filtration permits easy relocation from one mailroom or processing facility to another.



## CONTENTS:

Product Overview (p.2)  
Design Features (p.3)  
Performance & Selection (p.4)  
Filtration Technology (p.5)  
Specifications (p.6)  
Options & Accessories (p.8)

**SafeSEARCH**  
Ductless Fume Hoods

24 • 36 • 48

PERFORMANCE & SELECTION

4

Air Science high-efficiency fume hoods are expertly designed to meet specific applications and certified for quality construction. Standard features, options and accessories are developed purposefully to enhance user-friendliness.

## PERFORMANCE

The Purair SafeSEARCH accommodates the full range of [Multiplex Filtration System](#) options.

The high capacity air handling system delivers face velocity of 100 fpm in compliance with US and international safety and performance standards.

## DESIGN

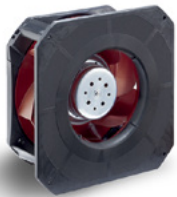
Professional quality Air Science fume hoods comply with current technical and safety regulations.

The cabinet frame and work surfaces, comprised of industrial components, are durable and chemically resistant.

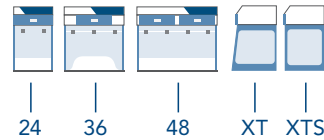
The Air Science filter assembly is easy to access and change.

## RELIABILITY

Internal systems are isolated from fumes, extending product life.



**Energy-efficient** EC blowers promote long life and dependable performance of Purair SafeSEARCH fume hoods.



## SELECTION

Purair SafeSEARCH products are available in 3 standard widths, 2 depth options, in metal or polypropylene construction, totaling 12 standard models.

Custom manufacturing capabilities permit adaptations of standard cabinets such as polypropylene construction shown here with mobile base cabinet.



## CONTROL

The **basic control panel** is standard on Purair SafeSEARCH models and includes an On/Off switch and filter blockage alarm.

The **optional FSA/Autocal controller** displays the airflow and offers limited detection of low concentrations of hydrocarbon, some gases and organic acids. Audio and visual alarms alert users to filter saturation and if the airflow reaches preset thresholds. An Hour Counter is also included.

The **optional FSA controller** offers limited detection of low concentrations of hydrocarbon, some gases and organic acids. Audio and visual alarms alert users if filter saturation reaches preset thresholds. An Hour Counter and Low Airflow alarm are also included.

The **optional Autocal controller** displays the airflow. Audio and visual alarms alert users if the airflow reaches preset thresholds. An Hour Counter is also included.



Basic Control Panel



FSA Control Panel



FSA/Autocal Control Panel



Autocal Control Panel

120 6th Street, Fort Myers, FL 33907

Toll Free. 800-306-0656 \ [www.airscience.com](http://www.airscience.com)

Specifications are subject to change without notice or obligation on the part of Air Science. For questions contact Air Science.

<sup>1)</sup> Energy consumption disclosure is based on internal testing with primary filters during normal operation. Power consumption published is nominal and dependent on cabinet size.

## CONTENTS:

Product Overview (p.2)  
Design Features (p.3)  
Performance & Selection (p.4)  
Filtration Technology (p.5)  
Specifications (p.6)  
Options & Accessories (p.8)



## FILTRATION

At the heart of the Purair product line is innovative filtration technology. The **Multiplex Filtration System** consists of a pre-filter and main carbon and HEPA filters. The system permits a customized combination of filter media and configuration for chemical and physical adsorption specific to each application need.

The carbon filter media is treated to attain the proper porosity and aggregate surface area and to react with several ranges of aerosolized chemicals while the integrated HEPA filter captures particulates, powders, or biological contaminants. The mechanical design enhances safety, convenience and overall value.

View available filters and descriptions on [page 7](#).

**SECUR.**  
safe disposal service

Filter disposal services are available in selected markets providing responsible destruction or recycling of used saturated filters in authorized facilities.

**SafeSEARCH**  
Ductless Fume Hoods

24 • 36 • 48

FILTRATION TECHNOLOGY

5

## FILTER CONFIGURATION

The Multiplex feature permits one or more filtration options to be combined to meet a wider range of multiple-use applications. The Purair SafeSEARCH can be equipped with a single activated carbon main filter or with a stacked configuration which combines two main filters.

The carbon filter is sized to fit the specified product model number and configured to optimize airflow across 100% of the filter surface area. The self-contained assembly maximizes filter efficiency, prolongs filter life, optimizes diffusion and saturation and improves user safety.

- P. Electrostatic Pre-Filter:** Protects the main filters from aerosols, mists, dust and particulates.
- C. Activated Carbon Main Filter:**  
A single or stacked filter configuration.
- H. HEPA/ULPA Filter:** Both HEPA and optional ULPA filters use micro-glass fiber media designed to capture fine particles and biologicals. Both filters can capture particles smaller than the micron size for which they are tested. HEPA and ULPA filter efficiencies are 99.97% at 0.3 microns and 99.999% at 0.12 microns respectively.

### MULTIPLEX FILTRATION SYSTEM, SUMMARY

Application	Chemical	Powder/ Biological	Chemical & Powder	Chemical within Cleanroom
Secondary/ Stacked Filter, Optional	C	H	C	H
Primary Filter	C	H	H	C
Pre-Filter	P	P	P	P

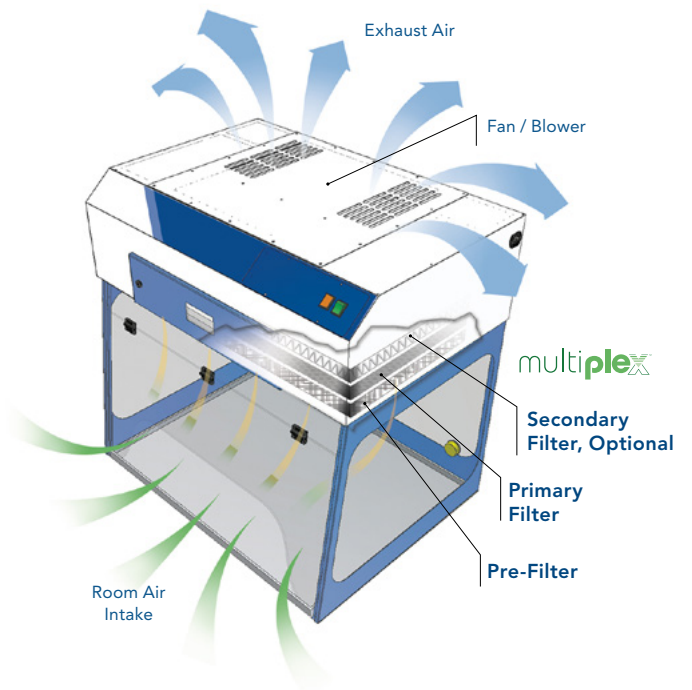
The system can be configured for the capture of acids, bases and particulates, such as biological aerosols, when paired with HEPA or ULPA filters.

## AIRFLOW

Contaminated air is pulled through the Multiplex Filtration System where activated carbon adsorbs chemical vapors and the HEPA filter captures particulates. Clean air is returned to the room.

**The main filters** are easy to replace, no tools required. The filter clamps tightly against the filter gasket to prevent filter bypass and maintain filter integrity.

**⚠ The pre-filter** may be replaced while unit is in operation.



## CONTENTS:

- Product Overview (p.2)
- Design Features (p.3)
- Performance & Selection (p.4)
- Filtration Technology (p.5)
- Specifications (p.6)
- Options & Accessories (p.8)

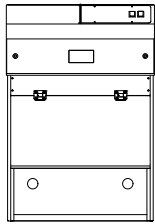
**SafeSEARCH**  
Ductless Fume Hoods

24 • 36 • 48

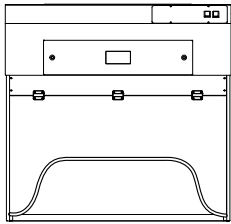
SPECIFICATIONS

6

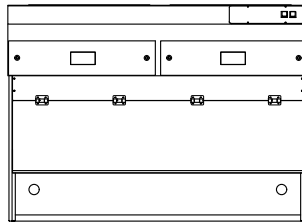
### P5-24-XT SafeSEARCH



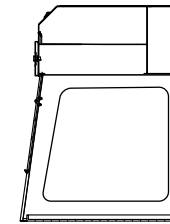
### P5-36-XT SafeSEARCH



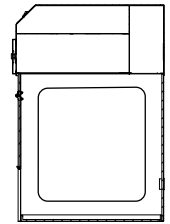
### P5-48-XT SafeSEARCH



### Standard Depth (XT)



### Reduced Depth (XTS)



MODEL	DIMENSIONS			WEIGHT (LBS/KG)	
	Internal Height	External (W × D × H)	Shipping (W × D × H)	Net	Ship
<b>Standard Depth Models (XT)</b>					
P5-24-XT SafeSEARCH	23.6" / 600 mm	24" × 27" × 35" / 610 × 676 × 889 mm	40" × 40" × 40" / 1016 × 1016 × 1016 mm	72 / 33	150 / 68
P5-36-XT SafeSEARCH	23.6" / 600 mm	36" × 27" × 35" / 914 × 676 × 889 mm	40" × 40" × 40" / 1016 × 1016 × 1016 mm	99 / 45	170 / 77
P5-48-XT SafeSEARCH	23.6" / 600 mm	48" × 27" × 35" / 1219 × 676 × 889 mm	55" × 40" × 45" / 1397 × 1016 × 1143 mm	138 / 63	230 / 104
<b>Reduced Depth Models (XTS) for countertops 24" or less</b>					
P5-24-XTS SafeSEARCH	23.6" / 600 mm	24" × 24" × 35" / 610 × 610 × 889 mm	40" × 40" × 40" / 1016 × 1016 × 1016 mm	72 / 33	150 / 68
P5-36-XTS SafeSEARCH	23.6" / 600 mm	36" × 24" × 35" / 914 × 610 × 889 mm	40" × 40" × 40" / 1016 × 1016 × 1016 mm	99 / 45	170 / 77
P5-48-XTS SafeSEARCH	23.6" / 600 mm	48" × 24" × 35" / 1219 × 610 × 889 mm	55" × 40" × 45" / 1397 × 1016 × 1143 mm	138 / 63	230 / 104

## CONTENTS:

- Product Overview (p.2)
- Design Features (p.3)
- Performance & Selection (p.4)
- Filtration Technology (p.5)
- Specifications (p.6)
- Options & Accessories (p.8)

### PRODUCT SPECIFICATIONS

Filtration	P5-24-XT SafeSEARCH P5-24-XTS SafeSEARCH	P5-36-XT SafeSEARCH P5-36-XTS SafeSEARCH	P5-48-XT SafeSEARCH P5-48-XTS SafeSEARCH
Face Velocity	100 fpm	100 fpm	100 fpm
Construction	P5-24-XT SafeSEARCH P5-24-XTS SafeSEARCH	P5-36-XT SafeSEARCH P5-36-XTS SafeSEARCH	P5-48-XT SafeSEARCH P5-48-XTS SafeSEARCH
Finish	<... White epoxy coated steel frame and head unit. Clear sides and back panel. ...>		
Blower	<... EC blower. ...>		
Controls	<... Main On/Off. ...>		
Electrical	<... 120V, 60Hz or 230V, 50Hz voltages available. Specify when ordering. Other voltage options available. ...>		
Monitoring	<... Filter blockage alarm, standard. ...>		
Efficiency	P5-24-XT SafeSEARCH P5-24-XTS SafeSEARCH	P5-36-XT SafeSEARCH P5-36-XTS SafeSEARCH	P5-48-XT SafeSEARCH P5-48-XTS SafeSEARCH
Power Consumption <sup>1</sup>	22 watt	34 watt	50 watt
Lighting	<... LED. ...>		

<sup>1</sup> All measurements are with Filter Type ASTS-001 and ASTS-030.

<sup>2</sup> Measured 12" (30 cm) from the cabinet front and 15" (38 cm) above the work surface plane.

### FILTER SPECIFICATIONS

Purair Model	P5-24-XT SafeSEARCH P5-24-XTS SafeSEARCH	P5-36-XT SafeSEARCH P5-36-XTS SafeSEARCH	P5-48-XT SafeSEARCH P5-48-XTS SafeSEARCH
Secondary/Stacked Filter, Optional*	(1)	(1)	(2)
Primary Filter*	(1)	(1)	(2)
Pre-Filter*	(1)	(1)	(2)

\* For specific examples refer to Multiplex filtration system summary on [page 5](#).

### FILTER SUMMARY

Formula	Description
GP Plus!	The most widely used filter in the range, primarily for solvent, organic and alcohol removal.
HEPA	Powders and particulates.

View additional information on the Multiplex Filtration System on [page 5](#).



Through our partner company [Filtco Filters](#), Air Science is a single source supplier of all pre-filters, carbon filters and HEPA/ULPA filters used in our products.

## CONTENTS:

- Product Overview (p.2)
- Design Features (p.3)
- Performance & Selection (p.4)
- Filtration Technology (p.5)
- Specifications (p.6)
- Options & Accessories (p.8)

## OPTIONS & ACCESSORIES

Purair Model		P5-24-XT SafeSEARCH P5-24-XTS SafeSEARCH	P5-36-XT SafeSEARCH P5-36-XTS SafeSEARCH	P5-48-XT SafeSEARCH P5-48-XTS SafeSEARCH
FSA/Autocal Controller*	The optional FSA/Autocal controller displays the airflow and offers limited detection of low concentrations of hydrocarbon, some gases and organic acids. Audio and visual alarms alert users to filter saturation and if the airflow reaches preset thresholds. An Hour Counter is also included.	ADV-P	ADV-P	ADV-P
FSA Controller*	The optional FSA controller offers limited detection of low concentrations of hydrocarbon, some gases and organic acids. Audio and visual alarms alert users if filter saturation reaches preset thresholds. An Hour Counter and Low Airflow alarm are also included.	FSA	FSA	FSA
Autocal Controller*	The optional Autocal controller displays the airflow. Audio and visual alarms alert users if the airflow reaches preset thresholds. An Hour Counter is also included.	AUTOCAL	AUTOCAL	AUTOCAL
Spill Tray (White)	Removable for easy cleaning. (Black polypropylene spill tray standard.)	TRAY-P5-24-WHITE TRAY-P5-24S-WHITE	TRAY-P5-36-WHITE TRAY-P5-36S-WHITE	TRAY-P5-48-WHITE TRAY-P5-48S-WHITE
Dwyer Airflow Meter	Continuous display of face velocity.	DWYER	DWYER	DWYER
Base Stand, Mobile, with Casters	Provides a lower storage shelf; accommodates wheelchair access. Locking casters fix the hood in place.	CART-25	CART-36	CART-50
Base Cabinet, Fixed (Metal)	Provides storage space below.	CART-MCC-25	CART-MCC-36	CART-MCC-50
Base Cabinet, Fixed (Polypropylene)	Provides storage space below.	CART-SSC-25	CART-SSC-36	CART-SSC-50
Fire Safety Cabinet Base	Flame resistant safe storage for combustible and flammable liquids.	CART-FSC-25	CART-FSC-36	CART-FSC-50
Remote Control**	Wired controller, provides lower access height to comply with ADA requirements.	RC-P	RC-P	RC-P
Polypropylene Construction*	Ductless fume hoods are available in all polypropylene construction.	P5-24-XT-PP P5-24-XTS-PP	P5-36-XT-PP P5-36-XTS-PP	P5-48-XT-PP P5-48-XTS-PP
Duplex Electrical Outlet*	Two NEMA-1420R receptacles with ground fault interrupter. 120V service standard; international fixtures available.	AS-GFI	AS-GFI	AS-GFI
Service Fitting*	Cabinets can be fitted with service fixtures in sidewall or on work surface.	<... SF-X. Specify service fitting type (faucet, valve, petcock) and location when ordering. ...>		
Stainless Steel Hanging Rod*	Hanging rod spans the width of the cabinet.	HANGR-P5-24	HANGR-P5-36	HANGR-P5-48
Cup Sink, Mounts into Tray*	Polyethylene cup sink (3" x 5" x 9") is fitted into the base tray. Other sizes and materials available. Contact Air Science for ordering information.	SINK	SINK	SINK
UV Lamp***	Creates light emission conditions know to safely decontaminate interior surfaces. Includes a timer, door microswitch, fully closing front sash and UV filtering clear polycarbonate panels. The UV operation must comply with local codes and facility safety practices.	UV-P5-24	UV-P5-36	UV-P5-48
Full Front Closure*	Fully closing front sash.	FSASH-25	FSASH-36	FSASH-48

\* Factory installed; specify when ordering.

\*\* Handheld box connects via cable to head unit. Includes On/Off switch and blower speed control. Can be placed inside work zone.

\*\*\* Includes timer, door microswitch and fully closing front sash, all clear panels polycarbonate (UV filtering). Safety precautions need to be followed.



## CONTENTS:

- Product Overview (p.2)
- Design Features (p.3)
- Performance & Selection (p.4)
- Filtration Technology (p.5)
- Specifications (p.6)
- Options & Accessories (p.8)

**SafeSEARCH**  
Ductless Fume Hoods

24 • 36 • 48

OPTIONS & ACCESSORIES

9

## WARRANTY

This product is protected by the Air Science Legacy Limited Lifetime Warranty™.



For details visit the [Warranty section](#) of our website.

## STANDARDS & COMPLIANCE

Quality Management Systems	ISO 9001: 2015
Electrical Safety	UL-C-61010-1 CAN/CSA C22.2 61010-1-12 EN 61010-1:2010 CE Mark
OSHA, Occupational Safety and Health Administration	OSHA Standard -29 CFR, Safety and Health Regulations for General Industry, 1910.1450: Occupational exposure to hazardous chemicals in laboratories. Part B, definition, laboratory type hood. This product may assist you with compliance or as part of your chemical hygiene plan. Please consult your Safety Officer and/or Industrial Hygienist.
Environment	ISO 14001: 2015 ENERGY STAR® Partner



120 6th Street \ Fort Myers, FL 33907  
T. 239-489-0024 \ **Toll Free.** 800-306-0656 \ **F.** 800-306-0677  
[www.airscience.com](http://www.airscience.com)

The information contained in this manual and the accompanying product are copyrighted and all rights are reserved by Air Science. Air Science reserves the right to make periodic minor design changes without obligation to notify any person or entity of such change.

